

Click on a tab above to read the associated article

17 January 2008

**NEW!**

# xpstorm v10.6

## for urban drainage design



XP Software is excited to announce the release of **xpstorm version 10.6**, our hydrodynamic stormwater design and analysis software program. **xpstorm** offers a cost-effective solution for those seeking to create stormwater-only models, such as pipe and open channel systems that incorporate conventional storage BMP and new Low Impact Development (LID) practices. **xpstorm** simulates both quantity and quality in these systems allowing the users to optimize the treatment and control of stormwater releases.

For more information about the uses and abilities of this comprehensive stormwater model, please visit our website at <http://www.xpsoftware.com/products/xpstorm.htm>

Version 10.6 adds many new enhancements to this already powerful software:

**AutoCAD Module now included as part of base package (\$500 value)!** The AutoCAD module allows the use of DWG and DXF background images in real-world coordinates.

**GIS link now included as part of base package (\$1,150 value)!** The GIS link interfaces with existing GIS and external databases such as spreadsheets, asset management software and other OLE/ODBC compliant databases to import and export model data and results.

**Sacramento County Methods:** XP Software has worked with the Sacramento County Dept. of Water Resources to include the Nolte and Sacramento Hydrologic Methods along with **xpstorm's** hydraulic routing methods for stormwater analysis.

**xp2D Module:** This cutting-edge technology simulates overland flow in both urban and rural scenarios (outside the pipes/channels), allows flooding depths and water surface elevations to be determined anywhere in your model domain.

Some Enhancements require add-on modules (*click on a module for more information*):

- [DTM](#)
- [Pumps and Orifices](#)
- [Water Quality](#)
- [Real Time Control](#) (RTC)
- [xp\\_2D](#)
- [xpviewer](#)

If you're new to **xpstorm** and want to try it for yourself, visit [this link](#) to obtain an evaluation copy. If you have an older version of **xpstorm** and would like the latest, please contact your local sales office. For pricing, call or email one of our representatives today. See below for contact details.

**Model with Confidence using xpstorm v10.6.**

[back to top](#)

# new tools from XP Software

XP Software is excited to offer new tools to our customers with the addition of WMS, GMS and SMS titles. Now, Surface Water, Ground Water and Watershed modeling have never been easier. These premier software modeling tools have been the proven leaders for over 15 years. Click on the following link for more details: <http://www.xpsoftware.com/products/default.htm>



The Watershed Modeling System (**WMS**) is a comprehensive graphical modeling environment for all phases of watershed hydrology. Automatically delineate watersheds and basins, calculate geometric parameters, compute GIS overlays and more. In the coming months, a direct link will be included that will transfer data between WMS and **xpswmm** (a free update for those who purchase now).



The Groundwater Modeling System (**GMS**) provides tools for every phase of a groundwater simulation including site characterization, model development, calibration, post-processing, and visualization. GMS supports both finite-difference and finite-element models in 2D and 3D including **MODFLOW 2000, MODPATH, MT3DMS/RT3D, SEAM3D, ART3D, UTCHEM, FEMWATER, PEST, UCODE, MODAEM** and **SEEP2D**.



The Surface Water Modeling System (**SMS**) is a comprehensive environment for two and three-dimensional hydrodynamic modeling. A pre- and post-processor for surface water modeling and design, **SMS** includes 2D finite element, 2D finite difference, 3D finite element modeling tools. Analyze currents, water quality, and sediment transport in rivers, bays/harbors, estuaries, and coastal areas with a suite of model engines from the USACE, the FHWA, and private model developers.

[back to top](#)

## xpertcare

helping you get the most out of your investment.

XP Software recently launched our **xpertcare** program. This program not only replaces our previous maintenance program, but provides additional benefits to our customers as well. Among these benefits is the provision of quarterly software primers or educational videos.

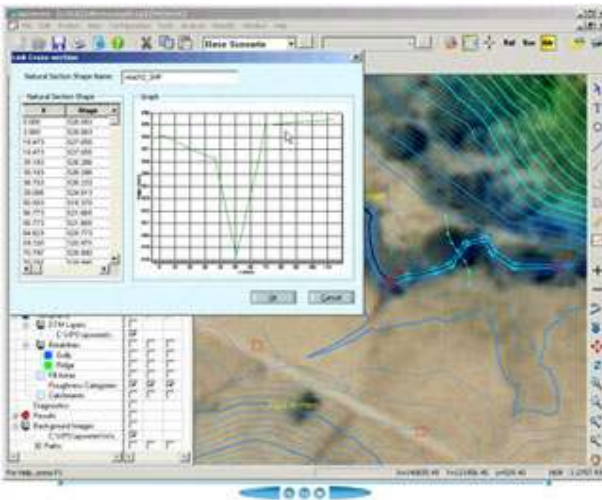
These online primers are available to all customers with current **xpertcare** contracts. If you have a current contract, you are officially invited to login to the **xpertcare** section of our website and download our first primer from our Downloads page.

If you do not have a current **xpertcare** contract and would like to know more, please contact your local XP Software office via email at [sales@xpsoftware.com](mailto:sales@xpsoftware.com), or by calling one of the numbers at the foot of this email.

## Primer #1: The Digital Terrain Module

The DTM is one of the most recent additions to our **xpswmm** and **xpstorm** software programs. In **xpswmm** version 10.6, the DTM was made part of the base package of the program.

This online video will be helpful to new and seasoned users of the program. [Please login now to view this video from our downloads page.](#)



[back to top](#)



# Celebrating Engineers and their **xp**ertise

**You keep flood waters out of our homes.  
You design systems that keep our neighborhoods livable.  
You find new and better ways to keep our rivers and oceans safe and clean.**

**THANK YOU.**

XP Software is pleased to announce the newly created ***Award of expertise and excellence*** to honor the outstanding work of XP Software Modelers around the world in water resource management. The ***Award of expertise and excellence*** will be given to XP Software users for outstanding work in specialized and diverse applications in the planning and delivery of infrastructure improvements.

Diverse areas of projects for submissions will apply to:

**Stormwater  
Wastewater  
Flooding and Floodplain Management  
LID/WSUD**

[Please click on the this link for information.](#)

**Recipients will receive:**

- their choice of \$350.00 Cash (USD), donation to a water or flood-related charity (such as WaterAid or American Red Cross), or a GPS System (up to \$350.00, car or handheld type).
- a 1-day training voucher towards a Public Workshop (in the US, Canada, or Australia), or an online webinar session.
- a Certificate of Award (applicable to either the individual engineer or firm), a Plaque of Award for the organization
- recognition in industry publications, on the XP Software website, and within the XP Software email newsletter.

This newsletter marks the beginning of our submission period. If you would like to submit a project for award consideration, [please click on the this link for information, guidelines and submission](#)

[form](#). All entrants are welcome, regardless of the project size or type of organization. The Award recipients will be announced in Spring 2008.

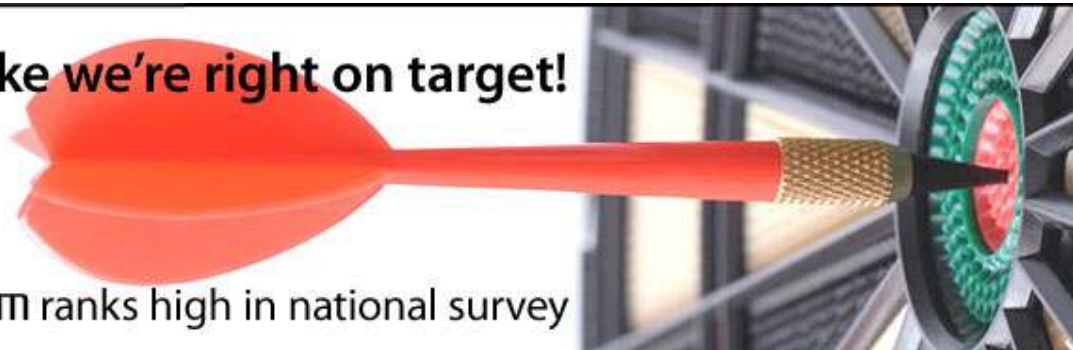
Submissions are to be received by the XP Software Awards Coordinator ([xpawards@xpsoftware.com](mailto:xpawards@xpsoftware.com)) by

**February 29, 2008**

[back to top](#)

**Looks like we're right on target!**

**xpswmm ranks high in national survey**



Black & Veatch's management consulting division, Enterprise Management Solutions, announced the availability of its 2007 National Stormwater Utility Survey in mid-November, 2007. This survey was conducted to find how others in our industry are addressing important issues such as organization/administration, planning, operations, finance, fees and billing, quality issues, public information, major challenges, and significant events affecting utilities. Their responses were received from 71 utilities in 22 states, with populations from 12,000 to 3.9 million.

[View the survey here.](#)

The Survey provides a considerable amount of interesting information on how utilities are dealing with a variety of issues. What caught our eye was this: When stormwater utilities were asked what stormwater computer models they used for their planning studies (page 2 of the survey), 32% of respondents said they used **xpswmm**! The only others that received a high rating were public domain programs.

It goes to show that we are doing something right; that by focusing on what we do best -- collection system modeling -- we are able to provide you with the tools you need to **model with confidence**.

[back to top](#)

xpsoftware

training opportunities

Our public workshop training opportunities offer a wealth of information for both novice and expert **xpswmm** and **xpstorm** users. First-time users will learn everything necessary to start on the right foot with real-time examples and real world knowledge. Experienced users will be introduced to new features and functions released in recent months, and will have the opportunity to refresh their skills. Product vouchers are provided, and continuing education credits are available in the U.S. and Canada. Be sure to join us at one or more of our upcoming training venues and you will become yet another satisfied client who can **Model With Confidence**.

(Find information as it is made available on our website, [HERE](#))



**Sydney, NSW , Australia**

Modelling Water Sensitive Urban Design (WSUD) with **xprafts**



**Orlando, FL , USA**

Stormwater Management & Flooding with **xpswmm** and **xpstorm**

11, 12 & 13 February 2008





**Melbourne, VIC , Australia**

Stormwater and Wastewater Design Analysis with **xpswmm** and **xpstorm**  
12, 13 & 14 February 2008



**Adelaide, SA, Australia**

Stormwater and Wastewater Design Analysis with **xpswmm** and **xpstorm**  
4, 5 & 6 March 2008



**San Antonio, TX, USA**

Stormwater Management & Flooding with **xpswmm** and **xpstorm**  
19, 20 & 21 March 2008



**Brisbane, QLD, Australia**

Stormwater and Wastewater Design Analysis with **xpswmm** and **xpstorm**  
1, 2 & 3 April 2008



**Darwin, NT , Australia**

Stormwater and Wastewater Design Analysis with **xpswmm** and **xpstorm**  
15, 16 & 17 April 2008



**Chicago, IL , USA**

Sanitary & Combined Sewer Modeling with **xpswmm** and **xpstorm**  
16, 17 & 18 April 2008

Additional training services include onsite training and internet based training. Call our sales office for details on these or any other workshop.

**YOU ARE ALSO WELCOME TO VISIT US AT A TRADE SHOW!**

It will be a full year of trade shows and exhibitions for XP Software! If you are attending the following trade show, stop by our booth, meet our staff and be sure to get a demonstration of our latest software and associated modules.

**Stormwater & Urban Water Systems Modeling Conference**, 19-22 February 2008  
Toronto, Ontario, Canada

**Floodplain Management Conference**, 26-29 February 2008  
Wollongong, NSW, Australia

**Association of State Floodplain Managers Conference**, 18-23 May 2008  
Reno-Sparks, Nevada, USA

**Conference of the NSW and Queensland Stormwater Industry Association**, 8-11 July 2008  
Surfers Paradise, QLD, Australia

**StormCon**, 3-7 August 2008  
Orlando, FL, USA

**WEFTEC**, 19-22 October 2008  
Chicago, IL, USA

[back to top](#)

**CONTACT XP SOFTWARE:**

**North American Office:**

**XP Software, Inc.**  
700 NE Multnomah St., Suite 230  
Portland, OR 97232  
Phone US Order Hotline  
1-888-554-5022  
Fax Order Hotline  
1-888-554-5122  
[sales@xpsoftware.com](mailto:sales@xpsoftware.com)

**Australian Office :**

**XP Software Pty Ltd**  
8-10 Purdue Street  
Belconnen ACT 2617  
Postal Address:  
PO Box 3064  
Belconnen ACT 2616  
Phone Australian Order Hotline  
(02) 6253 1844  
Fax Order Hotline  
(02) 6253 1847  
[sales@xpsoftware.com](mailto:sales@xpsoftware.com)

Malaysia Office

**Lestari Software Enterprise**

No. 5-2, Jalan Temenggung 5/9,  
Bandar Mahkota Cheras, 43200 Cheras,  
Selangor D Ehsan, Malaysia

Tel: (6) 03 9010 4368

Fax: (6) 03 9010 4328

E mail: [sales@lestarisoftware.com](mailto:sales@lestarisoftware.com)